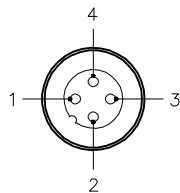


MALE END VIEW



1 = BLUE
2 = BROWN
3 = N/C
4 = GREEN/YELLOW

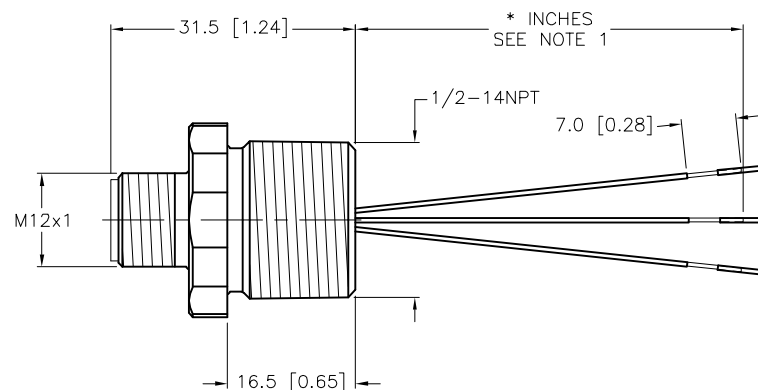
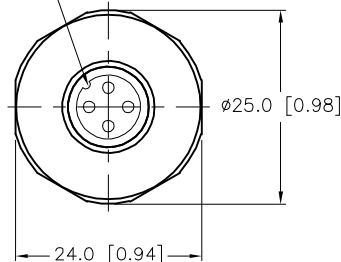


FOUNDATION™
fieldbus

SPECIFICATIONS

CONTACT CARRIER MATERIAL	NYLON OR TPU
CONTACT MATERIAL/PLATING	BRASS/GOLD
HOUSING MATERIAL/FINISH	STAINLESS STEEL/PASSIVATED
RATED CURRENT [A]	4.0 A
RATED VOLTAGE [V]	250 V
CONDUCTOR INSULATION MATERIAL	PVC
NUMBER OF CONDUCTORS [AWG]	4x18 AWG
TEMPERATURE RATING	-40°C to +105°C (-40°F to +221°F)
PROTECTION CLASS	MEETS NEMA 1,3,4,6P AND IEC IP68

KEYWAY ORIENTATION MAY
VARY FROM WHAT IS SHOWN

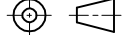


CABLE LENGTH	TOLERANCE *
ALL LENGTHS	+ 4% (OR 50mm) OF LENGTH - 0% (OR 0mm) OF LENGTH WHICHEVER IS GREATER
STRIP LENGTH	TOLERANCE *
0-7mm	±0.5mm
8-29mm	±1.0mm
30-49mm	±2.0mm
50-69mm	±3.0mm
70-100mm	±4.0mm
OVER 100mm	±5.0mm
* UNLESS OTHERWISE SPECIFIED	

NOTES:

- "*" INDICATES CABLE LENGTH IN INCHES. CONTACT TURCK TO ORDER SPECIFIC LENGTHS.
- "/C1188" DESIGNATES UNTINNED ENDS WITH INSULATION SLUG LEFT ON END. THIS IS TO BE DONE AFTER CONTINUITY TEST.

SOURCE DRAWING - FOR REFERENCE ONLY

RELATED DOCUMENTS 1. 2. 3. 4.	3RD ANGLE PROJECTION	THIS DRAWING IS CONFIDENTIAL AND THE PROPERTY OF TURCK INC. USE OF THIS DOCUMENT WITHOUT WRITTEN PERMISSION IS PROHIBITED.		<div>3000 CAMPUS DRIVE MINNEAPOLIS, MN 55441 1-800-544-7769 (763) 553-7300 (763) 553-0708 fax www.turck.us</div> <div>TURCK</div>			
							
MATERIAL	ALL DIMENSIONS DISPLAYED ON THIS DRAWING ARE FOR REFERENCE ONLY CONTACT TURCK FOR MORE INFORMATION	DRFT	RWC	DATE	08/18/09	DESCRIPTION FSV 49-*IN/14.5/C1188	
FINISH		APVD		SCALE	1=1.0		
		UNIT OF MEASUREMENT MILLIMETER [INCH]				IDENTIFICATION NO.	REV
		DO NOT SCALE THIS DRAWING				FILE: 777025102	SHEET 1 OF 1

D	UPDATE KEYWAY VIEW	NF	02/01/16	53349
REV	DESCRIPTION	BY	DATE	ECO NO.